



**PEMBERTON
HOLMES**

· ESTABLISHED 1887 ·



Stunning Lakes and Mountain Views

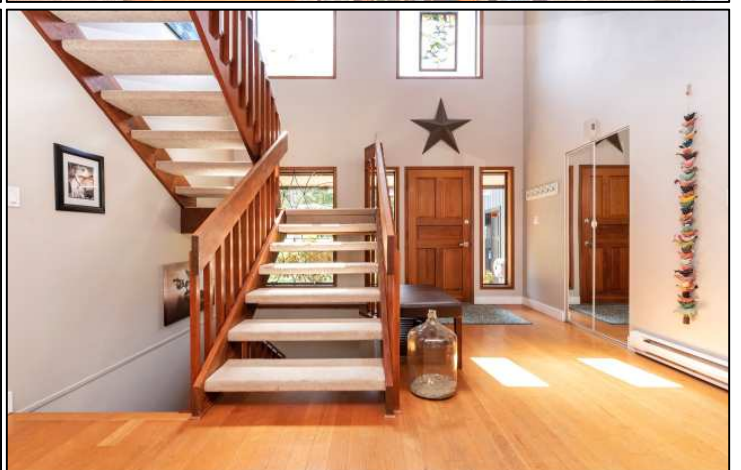
1171 Viewtop Road

This home is ready for your large family with over thirty-five hundred square feet. Your custom, Westcoast inspired home features open living space and grand vaults. Overlooking stunning lake and mountain vistas with complete privacy, you are sure to love it here. Impressive old growth edge grain fir floors cover the entrance to the spacious living area featuring a cozy pellet stove that keeps the bills low. A large family-sized kitchen over tiled floors and maple cabinetry includes a pantry, an island for friends to gather around, and a family-sized dining area which all leads to the double French doors and patio that is just perfect to entertain and to take in the spectacular view and setting. An adjoining convenient and spacious laundry/mud room connect to the oversized two-car garage. Finally, two bedrooms and a bathroom round out the main floor. Up the grand wood staircase, the balcony overlooks the impressive vaults and living space. The huge master suite offers a spacious walk-in closet, a full ensuite, and a French door to the balcony featuring two hundred and sixty degree panoramic views as well. Downstairs the kids can get away and make some noise. The lower level includes sprawling family space with laminate floors, a second efficient pellet stove, a large guest area or home office with French doors to the lower patio and yard, a fourth bedroom, and a three-piece bathroom. Resting in Lakeview subdivision, offering a peaceful private oasis on a quiet no through road in Maple Bay. Hiking and mountain biking are at your door step with marinas, golf courses, restaurants, and pubs all just minutes away. This is Cowichan living at its finest, call Ken now.

Please call to arrange a private viewing - Ken Neal 250 -746- 8123 www.kenneal.com

Photos

KEN NEAL
EXPERIENCE ON YOUR SIDE



Web www.kenneal.com Email ken@kenneal.com Phone 250 746 8123
Facebook www.facebook.com/kennealduncan